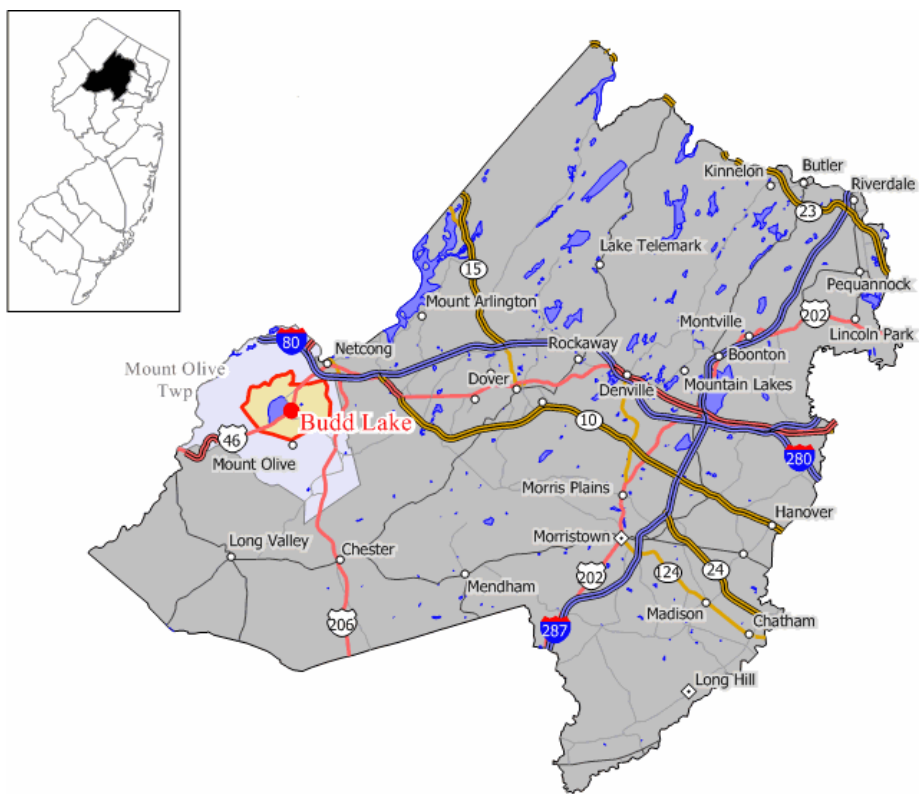


# Morris County, NJ

## Scanner Guide



By John Burricelli  
KC2KZZ

Updated 9/9/2011

# Morris County Law Enforcement Dispatch Summary

## Morris County Communications Center Dispatching Points

Morris County Sheriff  
Morris County Prosecutors Office  
Morris County Park Police  
Chester Twp.  
Chester Borough  
Mendham Borough  
Mendham Twp.  
Mine Hill Twp.  
Morristown  
Mount Arlington Borough  
Netcong Borough  
Randolph Twp.  
Rockaway Borough  
Roxbury Twp.  
Victory Gardens Borough Fire & First Aid  
Washington Twp.  
Wharton Borough

## New Jersey State Police Patrol Areas

<i>Patrol Station</i>	<i>Area Responsibility</i>	<i>Full/Part Time</i>
Somerville Station	Route 287 & Route 24	Full Time
Netcong Station	Route 80 & 287	Full Time
	Victory Gardens Borough	Full Time
Totowa Sub-Station	Route 80, 280 & 287	Full Time
Lake Hopatchcong Station	Lake Hopathcong	Full Time

# Morris Countywide Communications

## Morris County Sheriff's Dept. (Patrol Units now on County Trunk System)

<u>Freq</u>	<u>Input</u>	<u>PL</u>	<u>Use</u>
478.475	481.475	71.9	Jail Ops
472.250	475.250	71.9	Courts
153.740		173.8	Juvenile Detention
453.8125			Future Use

## Countywide Fire & EMS Dispatch

<u>Freq</u>	<u>Input</u>	<u>PL</u>	<u>Use</u>
476.2875		71.9	Fire & EMS Dispatch
151.055		173.8	Fire & EMS Dispatch (Harding & Chester)
481.100		71.9	County Fire Ground 1
473.850		110.9	County Fire Ground 2
46.420		131.8	Fire & EMS Dispatch
45.600		CSQ	Fire & EMS Dispatch
45.900		173.8	Mt. Arlington & Netcong Fire Ops
45.740		173.8	Mt. Arlington & Netcong Fireground
458.8375			18 <sup>th</sup> Dist. NJ First Aid Council
453.9375		179.9	UHF Link to 46.560
453.2875		162.2	UHF Link to 46.420

## CENCOM MICU Dispatch

<u>Freq</u>	<u>Input</u>	<u>PL</u>	<u>Use</u>
155.355		186.2	Ch. 1 East Dispatch
155.265		192.8	Ch. 2 West Disptach
155.175		85.4	Ch. 3 Secondary

\* Atlantic EMS units are dispatched on Ch. 2. Utilized by several towns for EMS coverage.

# Morris County Trunk System

## Motorola Group ID Assignment

Type: II

Fleet Map: S-0

Base Config 1	Base Config 2
Base Freq: 471.000	Base Freq: 476.000
Step Size: 12.5 Khz	Step Size: 12.5 Khz
Offset: 380	Offset: 520

Zone 1: Randolph, Morristown, Netcong, and Dover (Simulcast w/Zone 2)

Zone 2: Boonton, Kinnelon, and Jefferson Twp (Simulcast w/Zone 1)

Zone 3: Long Valley (West)

Zone 4: Chatham (East)

<u>ZONE 1</u>	<u>ZONE 2</u>	<u>ZONE 3</u>	<u>ZONE 4</u>
477.875	478.675	477.825	478.650
477.000	478.625	476.750	477.700
476.625	478.475	472.600	477.075
476.550	478.450	472.525	477.050
476.525	478.150		
476.425	477.925		
476.400	478.075		
477.800	471.675		
477.475			

## Trunk Site GPS Coordinates

Dover	405252.10	-743413.10
Ledgewood	405236.00	-744037.00
Long Hill	404913.90	-744811.80
Morristown	404750.30	-743413.10
Randolph	404952.50	-743206.50

<u>TGID</u>	<u>Description</u>
16	Comm Center (Emergency)
80	ALLCOM
33328	MIRS-1 (Countywide 1)
33344	MIRS-DESK (Countywide 2)

## County Law Enforcement

32784	CGLE-COMM-2	Sheriff & Park PD Dispatch
32816	SHERIFF-1	
32848	SHERIFF-MOBILE	
33040	PARK PD	
33072	PARK PD-MOBILE	
48	CG-COM	Sheriff & Park PD Common
32944	Prosecutor's Office	Encrypted
32976	Detectives	
33008	Unknown Law Enforcement	

# Morris County Trunk System & MIRS

## Municipal

33808	Police 1	Chester Boro/Twp., Harding Twp., Mendham Boro & Twp., Washington Twp.
33840	Police 2	Wharton, Rockaway Boro, Morris Plains
33872	Police 3	Roxbury Twp. , Netcong & Mt. Arlington
33904	Police 4	
33936	Police 5	Morristown, Morris Twp.
34064	Police 6	Boonton Twp., Mt. Lakes, Randolph Twp.
34416	Fire 1	Boonton, Mt. Lakes, New Vernon, Chester, Mendham Boro/Twp., Randolph Twp, Wash Tw
34448	Fire 2	Rockaway Boro, Wharton, Mine Hill, Morris Plains
34480	Fire 3	Roxbury , Netcong & Mt. Arlington
34512	Fire 4	Morristown, Morris Twp, Morris Plains
34576	EMS 1	Mendam Boro/Twp, Randolph, Chester, Rockaway, Washington Twp.
34604	EMS 2	Roxbury, Wharton, Mine Hill, Mt. Arlington, Netcong, Boonton, Chatham
34640	EMS 3	Morristown, Morris Plains, New Vernon

## Emergency Services

32880	Search & Rescue
33264	OEM
33312	HazMat

## Inter-Ops

33712	LESECURE (Law Enf. Secure Inter-Op)
33392	MIPD-1 (Police Inter-Ops)
33408	MIPD-2
33440	MIPD-3
33456	MIPD-4
33600	MIOP-1 (Multi-Agency Inter-Ops)
33616	MIOP-2
33632	MIOP-3
33664	MIOP-4
33424	MIFD-1 (Fire Inter-Ops)
33536	MIFD-2
33552	MIFD-3
33568	MIFD-4
33472	MIEM-1 (EMS Inter-Ops)
33488	MIEM-2
33504	MIEM-3
33520	MIEM-4

## County Government

33136	CG Comm-1
33200	CG Comm-2
33280	MUA
33104	County Buses (MAPS)
304	Special Event (Analog)

# Morris County MIRS Continued

## MORRIS INTEROPERABLE RADIO SYSTEM (MIRS)

<u>Ch. #</u>	<u>Name/Description</u>	<u>Freq</u>	<u>PL</u>	<u>Notes</u>
<b>Base Station Channel Plan</b>				
01	MIRS-1			Main Calling Channel
02	MC Desks			Base to Base Calling
<b>Mobile Radio Plan</b>				
<u>01</u>	MIRS-1			Main Calling Channel
02	MIRS-POLICE-1			Command Channel
03	MIRS-POLICE-2			Secondary Command
04	MIRS-POLICE-3			
<u>05</u>	MIRS-POLICE-4			
02	MIRS-FIRE-1			Command Channel
03	MIRS-FIRE-2			Secondary Command
04	MIRS-FIRE-3			
<u>05</u>	MIRS-FIRE-4			
02	MIRS-EMS-1			Command Channel
03	MIRS-EMS-2			Secondary Command
04	MIRS-EMS-3			
<u>05</u>	MIRS-EMS-4			
06	IOP-1			Incident Operations
07	IOP-2			Incident Operations
08	IOP-3			Incident Operations
09	IOP-4			Incident Operations
10	MORRIS ALLCOM			Countywide Talkgroup
11	UCALL	453.2125R	156.7	UASI Calling
12	UTAC1	453.4625	D025	Tactical 1 – Simplex
13	UTAC2	453.7125	D025	Tactical 2 – Simplex
14	UTAC3	453.8625	D025	Tactical 3 – Simplex
15	NJUTAC4	470.2375R	186.2	UASI Outside County Tac
16	NJUTAC5	470.0875R	173.8	UASI Outside County Tac
17	NJUTAC6	472.8750R	192.8	UASI In/Out County Tac
18	UTAC1RPTR	453.4625R	156.7	Tactical 1 – Repeater
19	UTAC2RPTR	453.7125R	156.7	Tactical 2 – Repeater
20	UTAC3RPTR	453.8625R	156.7	Tactical 3 – Repeater

\* This radio plan was taken from the Morris County OEM Radio Policy Document

### County Government Frequencies

<u>Freq</u>	<u>Input</u>	<u>PL</u>	<u>Use</u>
462.125	467.125	CSQ	County College Security

# Morris County Municipal

<u>Freq</u>	<u>Input</u>	<u>PL</u>	<u>Use</u>
<b>Town of Boonton</b>			
151.2725		D606	Police Dispatch
463.825			Fire Dispatch
45.320		CSQ	EMS Dispatch
37.640		192.8	Water Dept.
<b>Boonton Twp.</b>			
151.2725		D606	Police Dispatch
45.340		186.2	Fireground
46.080		100.0	Fire Tactical
45.320		CSQ	Boonton FAS
33.040		131.8	Board of Education
<b>Butler Borough</b>			
453.350	458.350	D251	Police Dispatch
37.660		CSQ	Public Works
<b>Chatham Borough &amp; Twp.</b>			
460.3125		114.8	Police Dispatch
154.310		179.9	Fire & EMS Dispatch
156.150		114.8	Fire Ops
154.4375	159.120	127.3	EMS Ops
155.715			Public Works
<b>Chester Borough (Public Safety now on County Trunk System)</b>			
151.370		156.7	Fire & EMS Trunk Simulcast
460.0375			Fireground Ops (Future)
465.0375			Fireground Ops (Future)
<b>Chester Twp. (Public Safety now on County Trunk System)</b>			
151.370		156.7	Fire & EMS Trunk Simulcast
150.995		131.8	Public Works
<b>Denville Twp.</b>			
45.980	45.300	127.3	Police 1
45.640		82.5	Police 2
472.200	475.200	179.9	Fire Dispatch
37.980		151.4	Board of Education
<b>Town of Dover</b>			
472.975		77.0	Police Dispatch
472.425	475.425	103.5	Fire & EMS Dispatch
471.450	474.450	77.0	Fireground
154.980		179.9	Water Dept.
37.980		127.3	Public Works
151.9775		103.5	Municipal

**East Hanover Twp.**

151.250	159.255	79.7	Police 1
158.955		127.3	Police 3
158.940		127.3	Fire & EMS Dispatch
155.205		D306	Board of Education

**Florham Park Borough**

460.3375	465.3375	156.7	Police Dispatch
453.075	458.075	74.4	Fire Dispatch
460.0625	465.0625	167.9	EMS Dispatch

**Hanover Twp.**

501.3875	504.3875	D223	Police 1 Dispatch
501.7125	504.7125	D223	Police 2
154.070		241.8	Fire & EMS Dispatch
45.240		CSQ	Public Works

**Jefferson Twp.**

45.800	45.260	173.8	Police Dispatch
46.560		173.8	Fire & EMS Dispatch & Ops
39.820		71.9	Public Works
464.150		91.5	Board of Education

**Kinnelon Borough**

477.350	480.350	192.8	Police Dispatch (Butler Borough)
470.925	473.925	186.2	Fire Dispatch
45.200		CSQ	Public Works

**Lincoln Park Borough**

476.600	479.600	D205	Police Dispatch
478.500	481.500	D205	Fire & EMS Dispatch
481.900		D205	Fire & EMS Channel 2
45.200		CSQ	Public Works

**Long Hill Twp. (Dispatched by Bernards Twp., Somerset County, moving to MIRS by 2011)**

155.580	154.830	77.0	Police Dispatch (Bernards Twp.)
470.650	473.650	114.8	Police Dispatch
460.650	465.650	114.8	Police Dispatch
154.415	150.805	203.5	Fire & EMS Dispatch
470.350	473.350	D703	Fire Dispatch
453.125	458.125	D703	EMS Dispatch
46.540		114.8	Public Works
461.1875		D731	Public Works

**Note:** 800 Units are Long Hill Twp., 40 units are Bernards Twp.

**Madison Borough**

476.325	479.325	77.0	Police Ch. 1
477.025	480.025	97.4	Police Ch. 2
460.050		D503	Police Use
460.5125		D503	Police Mobile
471.225	474.225	D032	Fire Ch. 1 Dispatch
474.100		D032	Fire Ch. 3 Tactical
462.950		D025	EMS Dispatch
47.580		110.9	EMS Use
45.080		82.5	Public Works

**Mendham Twp.**

472.1875	475.1875		EMS (Future)
45.200		114.8	Public Works

**Montville Borough**

478.225	481.225	N293	Police 1 Dispatch
478.875	481.875	D265	Police 2 Secondary
453.5375		179.9	Fire Dispatch
45.320		CSQ	Public Works
471.475		71.9	Public Works

**Morris Twp. (Public Safety now on County Trunk System)**

453.5875	458.5875	D205	Fire Tactical
453.1375			Fireground
460.2875	465.2875	D411	EMS Dispatch
155.280		100.0	EMS Dispatch
45.520			OEM
46.580		CSQ	Public Works
460.425	465.425	82.5	Former Police Ch. 1
460.250	465.250	82.5	Former Police Ch. 2

**Morris Plains Borough (Public Safety now on County Trunk System)**

470.900	473.900	77.0	Fire Operations
470.600		77.0	Public Works

**Town of Morristown (Public Safety now on County Trunk System)**

460.3125		82.5	Detectives
453.450	458.450	123.0	Fire Tactical
460.2125	465.2125	D503	EMS Tactical
151.130		127.3	Public Works
453.2375		114.8	Parking Authority
453.4375		D411	Water Treatment Plant
460.025	465.025	82.5	Former Police Dispatch
46.420		136.5	Former Fire Dispatch

**Mount Olive Twp.**

156.060	153.875	D132	Police Dispatch
156.180		167.9	Fire & EMS Dispatch & Operations
159.105		167.9	Fire Tactical
156.120		167.9	EMS Tactical
45.440		82.5	Mt. Olive Twp. DPW

**Parsippany-Troy Hills Twp.**

851.375	806.375	N293	Police Ch. 1
852.800	807.800	N293	Police Ch. 2
477.175	480.175	127.3	Fire Ch.1 Dispatch
478.175	471.175		Fire Ch. 2 – Fireground 1
453.500		123.0	Fire Ch. 3 – Fireground 2
458.500		123.0	Fire Ch. 4 – Fireground 3
453.0625		71.9	Fire Ch. 5 – Fireground 4
453.1125		71.9	Fire Ch. 6 – Fireground 5
458.300		123.0	Fire Ch. 7 – Fireground 6
477.175			Fire Ch. 8 – Talkaround 1
478.175			Fire Ch. 9 – Talkaround 2
453.300			Fire Ch. 10 – Talkaround 6
477.850	480.850	103.5	EMS Dispatch /Talkaround
453.7875		151.4	EMS-Ground
458.875			Public Works (New UHF System)
453.875			Public Works Talk-Around
45.560		CSQ	Public Works
45.400		71.9	Public Works
46.040		173.8	Board of Education

**Pequannock Twp.**

453.800	458.800	91.5	Police Ch. 1
453.475	458.475	91.5	Police Ch. 2
453.025		91.5	Fire & EMS Dispatch
453.075		91.5	Fireground
45.200		CSQ	Public Works
151.115		203.5	Seniors Transport

**Randolph Twp. (Public Safety now on County Trunk System)**

477.225	480.225	D306	Fire Tactical
476.8125		D205	Fire Operations
476.900		D205	Fire Supply
476.350	479.350	D025	Tactical Repeater
476.975		D565	Municipal
453.675		D025	Board of Education
476.500	479.500	D205	Former Police Dispatch
476.725	479.725	D025	Former EMS Dispatch

**Riverdale Borough**

471.800	476.800	D115	Police Dispatch
472.200	472.200	192.8	Fire Dispatch
475.800			Fireground

**Rockaway Borough (Public Safety now on MIRS)**

45.320	CSQ	Public Works
33.100	192.8	Morris Hills Regional School District

**Rockaway Twp.**

154.785	114.8	Police Ch. 1
154.275	114.8	Police Ch. 2
154.220	192.8	Fire & EMS Dispatch
37.940	CSQ	Public Works
39.060	CSQ	Municipal

**Roxbury Twp. (Public Safety now on County Trunk System)**

478.600	481.600	162.2	Fire & EMS Trunk Simulcast
464.875		162.2	Public Safety Tactical 1
467.7625		162.2	Public Safety Tactical 2
47.580		186.2	Municipal
478.575	481.575	179.9	Public Works
468.275		123.0	Board of Education

**Washington Twp. (Public Safety now on County Trunk System)**

154.325		192.8	Fire Alerting (Simulcasted with County Paging)
477.1125		192.8	Fire Operations
453.9125			Fireground
453.9375			Fireground
460.125			Fireground
460.150			Fireground
463.675		192.8	Fire Private (Schooley's Mountain Fire)
471.4125	474.4125	179.9	Public Works
470.3875		103.5	Board of Education
154.085	158.880	192.8	<del>Ch. 1 Tactical (West Morris Tac-1)</del>
155.415		192.8	<del>Police Ch. 2 Washington Twp. (Ch. 3 = Califen Tower)</del>
153.770		192.8	<del>Fire Ch. 3 Fireground</del>
153.950		192.8	<del>Fire Ch. 4 Fireground</del>
154.040		192.8	<del>Fire Ch. 5 Fireground</del>
155.265		192.8	EMS Dispatch

**Wharton Borough (Public Safety now on County Trunk System)**

46.540	131.8	Public Works
--------	-------	--------------

## Federal Government Frequencies

165.1875	94.8	Picatinny Arsenal - Police
163.5125	107.2	Picatinny Arsenal - Fire & EMS
163.5375	131.8	Picatinny Arsenal – DPW
150.650	CSQ	Picatinny Arsenal – EOD Unit
163.4375	CSQ	Picatinny Arsenal – Safety Unit
173.5625	CSQ	Picatinny Arsenal – Testing Unit
173.5125	CSQ	Picatinny Arsenal – Transportation Unit
164.475	N6CA	Washington HQ, Morristown

## Picatinny Arsenal Future Trunk System

Motorola Astro APCO 25 9600 Baud

380.1750 Control Channel

<u>TGID</u>	<u>Description</u>
3	Police Dispatch
10	Fire & EMS Dispatch
101	Mutual Aid Simulcast
21	Range Control
2	Maintenance
15	DPW 1
16	DPW 2

## State Government - Dept. Of Human Services (Greystone)

NJSP Trunk System	TGID 36400	Human Services Police
855.7375	156.7	Human Services Police 5-TA
453.7375	458.7375	D023
458.2625		D023
153.815		127.3
		Fire Dispatch & Ops
		Fireground
		Old Fire Dispatch (Cross-Band w/UHF)

## Misc. Frequencies

451.275	456.275	D023	Drew University Police
464.475	469.475	94.8	Fairleigh Dickenson University
464.975	469.975	97.4	Rockaway Mall
48.500		141.3	Water Authority

## Key GPS Coordinates (For use in GPS enabled Scanners)

Center of County	405143.69	-743113.18
Boonton	405356.18	-742438.60
Denville	405331.99	-742839.99
Jefferson	405930.12	-743453.29
Long Valley	404709.01	-744550.00
Madison	404535.25	-742503.60
Morristown	404748.01	-742855.02

Credits:

North West Corner of NJ – <http://northwest-corner.com>

Long Island Scanning Resources – <http://www.fordyce.org/scanboard>

Radio Reference – <http://www.radioreference.com>

Morris County Office of Emergency Management - <http://www.morrisoem.org/>

FCC – <http://www.fcc.gov>

Yahoo Groups: nnj-scan & ScanCom

This document may be used freely for personal, non-profit and public safety use only. This document has been independently produced and has no affiliations to any agency mentioned in this document. Information listed here may or may not be accurate and should only be used for entertainment purposes only.

© 2011 by John Burricelli (KC2KZZ) – [john.burricelli@gmail.com](mailto:john.burricelli@gmail.com)

Please send updates to [pdfupdates@wc2em.net](mailto:pdfupdates@wc2em.net)

Receive email notifications of updates to this document. Go to <http://groups.yahoo.com/group/kc2kzz-pdf/> and click “Join”