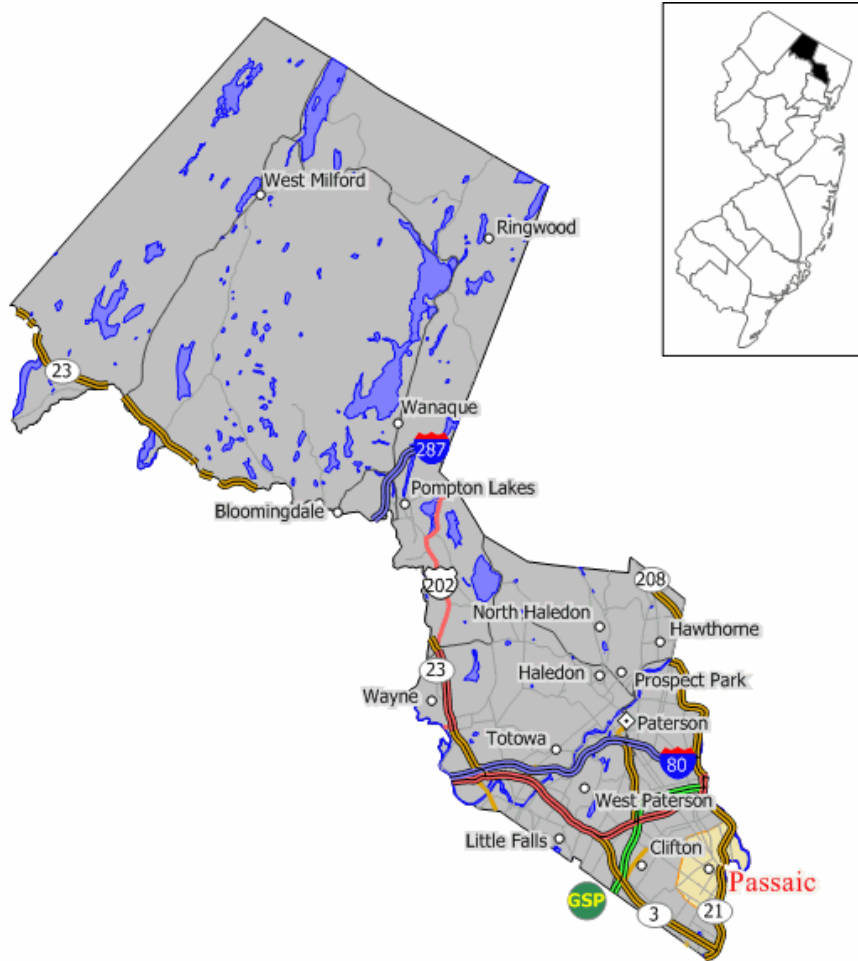


Passaic County, NJ

Scanner Guide



By John Burricelli
KC2KZZ

Updated 10/21/2011

Passaic County Law Enforcement Dispatch Summary

Passaic County Dispatching Points

Passaic County Sheriff	Self
	Prosecutors Office
	Prospect Park Borough
	County Road Dept.
Cities and Towns	Self Dispatched

New Jersey State Police Patrol Areas

<u>Patrol Station</u>	<u>Area Responsibility</u>	<u>Full/Part Time</u>
Totowa Sub-Station	Route 80	Full Time
	Route 287	Full Time
Bloomfield Station	Garden State Parkway	Full Time

Passaic County Communications

Passaic County Law Enforcement

<u>Freq</u>	<u>Input</u>	<u>PL</u>	<u>Use</u>
866.675	821.675	203.5	Sheriff-1 North & South
867.350	822.350	203.5	Sheriff-2 Central
460.3375			Jail Security
460.6375			Court Security
45.540	44.860	114.8	Old Sheriff Channel 1
45.220	45.820	114.8	Old Sheriff Channel 2
45.420		114.8	Old Sheriff Channel 3
151.070	156.045	88.5	Probation (Shared with Road Dept.)
155.685	158.970	136.5	Prosecutor 1
155.790		136.5	Prosecutor 2
155.775	153.845	88.5	Prosecutor 3 (shared with Road Dept.)

Passaic County Fire/HazMat/Emergency Management

<u>Freq</u>	<u>Input</u>	<u>PL</u>	<u>Use</u>
46.160	45.880	82.5	HazMat & OEM
39.680			OEM – 1 Event
44.880			OEM – 2
44.960			OEM – 3
458.4375			OEM – UHF
46.400		CSQ	Passaic County Mutual Aid Association – Ops
46.440		CSQ	PCMAA – 2 Mutual Aid
36.400		CSQ	PCMAA – 3 Fire Ground

Passaic County Fireground & Canteen Services

151.055		D365	Alerting
462.0250	467.0250	192.8	Dispatch
451.800	456.800	97.4	Operations
464.525	469.525	67.0	Operations North
469.550		67.0	Operations

Passaic County Area EMS

<u>Name</u>	<u>Freq</u>	<u>PL</u>	<u>Use</u>
Micom	155.175	100.0	Primary MICU Dispatch
JEMS-3	155.280	100.0	Statewide EMS
REMCS-5	155.295	85.4	MICU Dispatch
MONOC	451.475	210.7	North Jersey Ops
CenCom E	155.355	186.2	East Dispatch
CenCom W	155.265	192.8	West Dispatch
158.400		D565	Hatzoloh of North Jersey
462.5125		D172	Hatzoloh of Passaic & Clifton – Dispatch
457.3375			Hatzoloh of Passaic & Clifton – Mobile

County Government

<u>Freq</u>	<u>Input</u>	<u>PL</u>	<u>Use</u>
155.775	153.845	88.5	County Road Dept.
151.070	156.034	88.5	County Road Dept.
44.980	44.780	192.8	County Para-Transport
158.805			County Freeholders
453.7625	458.7625		County VoTech. H.S. Security
471.000			County VoTech. H.S. Maintenance
464.500	469.500	162.2	County College – Public Safety
37.520			North District Water Supply Commission
37.540			Passaic County Water Commission – Ops
37.700			Passaic County Water Commission – Mobile

Passaic County Municipal

<u>Freq</u>	<u>Input</u>	<u>PL</u>	<u>Use</u>
Bloomingtondale Borough			
37.300		151.4	Police 1
37.320			Police 2
33.960		94.8	Police 3
46.420		110.9	Fire & EMS
City of Clifton			
155.910	153.740	192.8	Police 1
155.625	154.890	192.8	Police 2
154.415	154.010	131.8	Fire & EMS 1
151.145	159.390	203.5	Fire & EMS 2
154.340		131.8	Fire Admin
154.265		131.8	Fireground
151.101		131.8	Public Works
155.055		131.8	Board of Education
Haledon Borough			
155.655	154.650	250.3	Police Dispatch
153.755		114.8	Fire
154.995	153.905	107.2	EMS
Hawthorne Borough			
460.1125	465.1125	131.8	Police Dispatch
453.850	458.850	110.9	Fire & EMS 1 – Dispatch
453.850		110.9	Fire & EMS 2 – Talk Around
453.175		110.9	Fire & EMS 3
45.320		CSQ	Public Works
Little Falls Twp.			
477.150	480.150	162.2	Police Dispatch
478.250		156.7	Fire & EMS

North Haledon Borough

155.070		141.3	Police Dispatch
45.480		CSQ	Fire
154.995	153.905	110.9	EMS
156.225			OEM VHF
453.2625			OEM UHF
45.040			OEM Low Band/Public Works 2
44.760			Public Works 1

City of Passaic

857.2625	812.2625	110.9	Police 1
858.6625	813.6625	110.9	Fire 1
856.2625	811.2625	110.9	Public Safety Secondary
453.425		82.5	Public Works
464.1500			Board of Education

* ITAC/CALL Inter-Op Freqs. may be used for Tactical Ops.

City of Paterson

460.300	465.300	82.5	Police 1
460.250	465.250	82.5	Police 2
460.225	465.225	82.5	Police 3
460.275	465.275	82.5	Police 4
500.3875	503.3875	192.8	Fire 1 Dispatch
500.5625	503.5625	192.8	Fire 2
505.1375		D025	Fireground
505.9375		D025	Fireground
502.0875	505.0875	192.7	EMS Dispatch
154.965		82.5	Public Works
451.400		192.8	Housing Authority Security & Operations
452.350		192.8	Housing Authority Secondary
451.400			BOE – Security 1
452.325			BOE – Security 2
461.575			BOE – Security 3
463.275			BOE – Security 4

Pompton Lakes Borough

471.800	474.800	D115	Police 1
471.650	474.650	D115	Police 2
506.325	509.325	D431	Fire 1
506.950	509.950	D431	Fire 2
471.500			OEM

Prospect Park

154.920	158.925	103.5	Police Dispatch
155.3375		127.3	Fire
154.995	153.905	107.2	EMS
156.165		CSQ	Public Works

Ringwood Borough

151.1675		100.0	Police Dispatch
154.7475		131.8	Fire & EMS 1
155.7975			Fire & EMS Secondary & DPW
37.900			EMS Private
46.040			Board of Education

Totowa Borough

477.575	480.575	162.2	Police Dispatch
476.3750	479.3750	206.5	Fire Dispatch
46.380		CSQ	Fire Dispatch (Old)
46.440		CSQ	Fireground (Old)
46.520		107.2	EMS Dispatch
45.700		151.4	Public Works

Wanaque Borough

453.5625	458.5625	D664	Police Dispatch
453.9625		D664	Police Car to Car
453.6625	458.6625	D155	Fire & EMS
45.4800		CSQ	Fire & EMS Alerting

Wayne Twp. (Migration to Trunk System in Progress)

471.2875	474.2875	71.9	Police 1
471.3125	474.3125	71.9	Police 2
471.3375	474.3375	71.9	Police 3 & Water Dept.
471.3875	474.3875	71.9	Police 4 & Road Dept.
500.8125	503.8125	192.8	Fire Dispatch
501.0625	504.0625	192.8	Fireground
476.4500	479.4500	162.2	EMS 1
476.575	479.575	162.2	EMS 2
464.325		162.2	Public Works
45.160		D606	Board of Education

West Milford

37.020	37.240	146.2	Police Dispatch
155.6625			Police Dispatch (Future)
46.380		156.7	Fire Dispatch
46.280		CSQ	Fireground
45.960		167.9	EMS Dispatch
155.160			OEM & Board of Ed

Woodland Park (Formerly West Paterson)

471.2500	474.2500	D606	Police 1
472.825	475.825	D606	Public Safety Secondary
477.7500	480.7500	D606	Fire Dispatch
46.520		CSQ	EMS Dispatch

William Paterson University

155.715 **153.800** **74.4**
154.625 **159.675** **74.4**

Police Dispatch
Security & Maintenance

Talkgroups on the PSE&G 900Mhz System (See NJ & NE PA Utilities Scanner Guide)

32016 - WPUPD - F1

32048 - WPUPD - F2

32080 - WPUPD - Patch

32240 - WPUPD - All Call

32112 - WPU - Facilities 1

32144 - WPU - Facilities 2

Wayne Twp. Public Safety Trunk System

Project 25 UHF Trunked Frequency Plan

472.1500 Control Channel
471.3375 Control Channel
476.5750
476.4500
471.3875
471.3125
471.2875

TGID

Description

Police

1001 Police Ch. 1 Dispatch
1002 Police Ch. 2 Look ups
1003 Police Ch. 3 Tac
1004 Police Ch. 4 Tac
1040 Police Ch. 5 Tac

9001 County Sheriff
9002 SPEN 1 Patch
9003 SPEN 4 Patch

Emergency Services

2001 Fire Dispatch (Patched from UHF)
2002 Fire Ops 2
2005 Fire Ops 3
2010 Fire Co. 1 Ops
2020 Fire Co. 2 Ops
2030 Fire Co. 3 Ops
3040 Fire Co. 4 Ops
2050 Fire Co. 5 Ops
4400 Fire Bureau
12576 EMS Dispatch
3001 EMS Ops 1
3002 EMS Ops 2
3003 EMS Ops 3
3004 EMS Ops 4
5001 Emergency Management

Municipal

4001 DPW-Police Desk Calling
4002 DPW Tac 1
4003 DPW Tac 2
4200 Building Maintenance
4210 Building Dept.
4261 Animal Control
4290 Parks Dept.
4300 Road Dept.
4500 Water Dept.
4501 Water Plant
4600 Health Dept.
4900 Information Systems

Appendix A – GPS

Key GPS Coordinates (For use in GPS enabled Scanners)

Center of County	405959.08	-741645.85
Northern County	405959.08	-741645.85
Southern County	405443.90	-741223.71
City of Paterson	445500.00	-741020.18
City of Passaic	405124.00	-740743.58

Credits:

Radio Reference – <http://www.radioreference.com>

Passaic County Sheriff's Dept. - <http://www.pcsheriff.org/>

North West Corner of NJ – <http://northwest-corner.com>

FCC – <http://www.fcc.gov>

Yahoo Groups: njj-scan & ScanCom

This document may be used freely for personal, non-profit and public safety use only. This document has been independently produced and has no affiliations to any agency mentioned in this document. Information listed here may or may not be accurate and should only be used for entertainment purposes only.

© 2011 by John Burricelli (KC2KZZ) – john.burricelli@gmail.com

Please send updates to pdfupdates@wc2em.net

Receive email notifications of updates to this document. Go to <http://groups.yahoo.com/group/kc2kzz-pdf/> and click “Join”